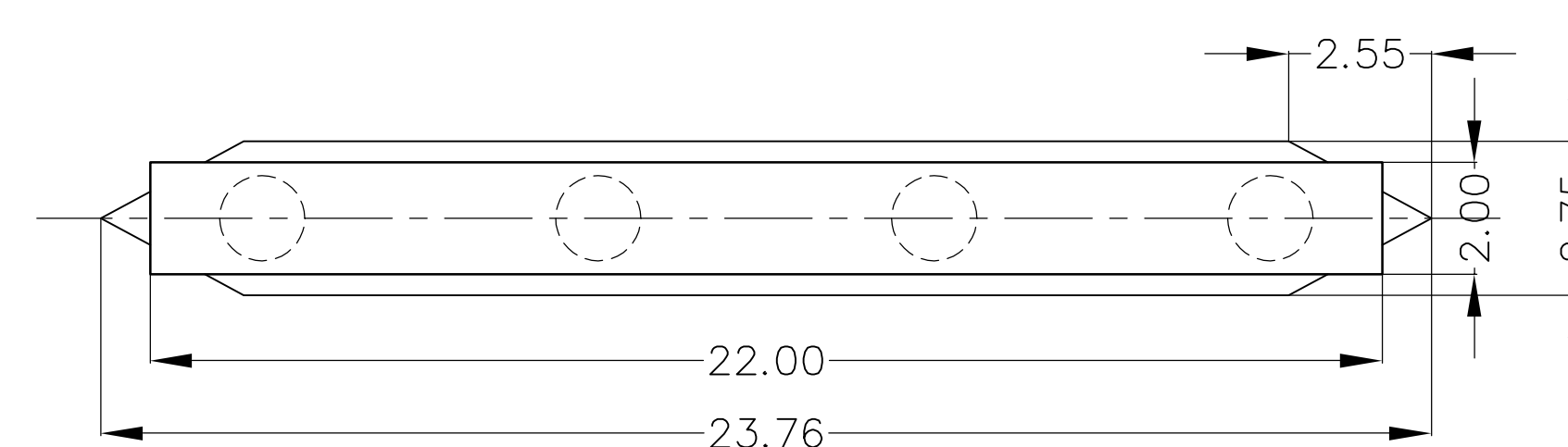


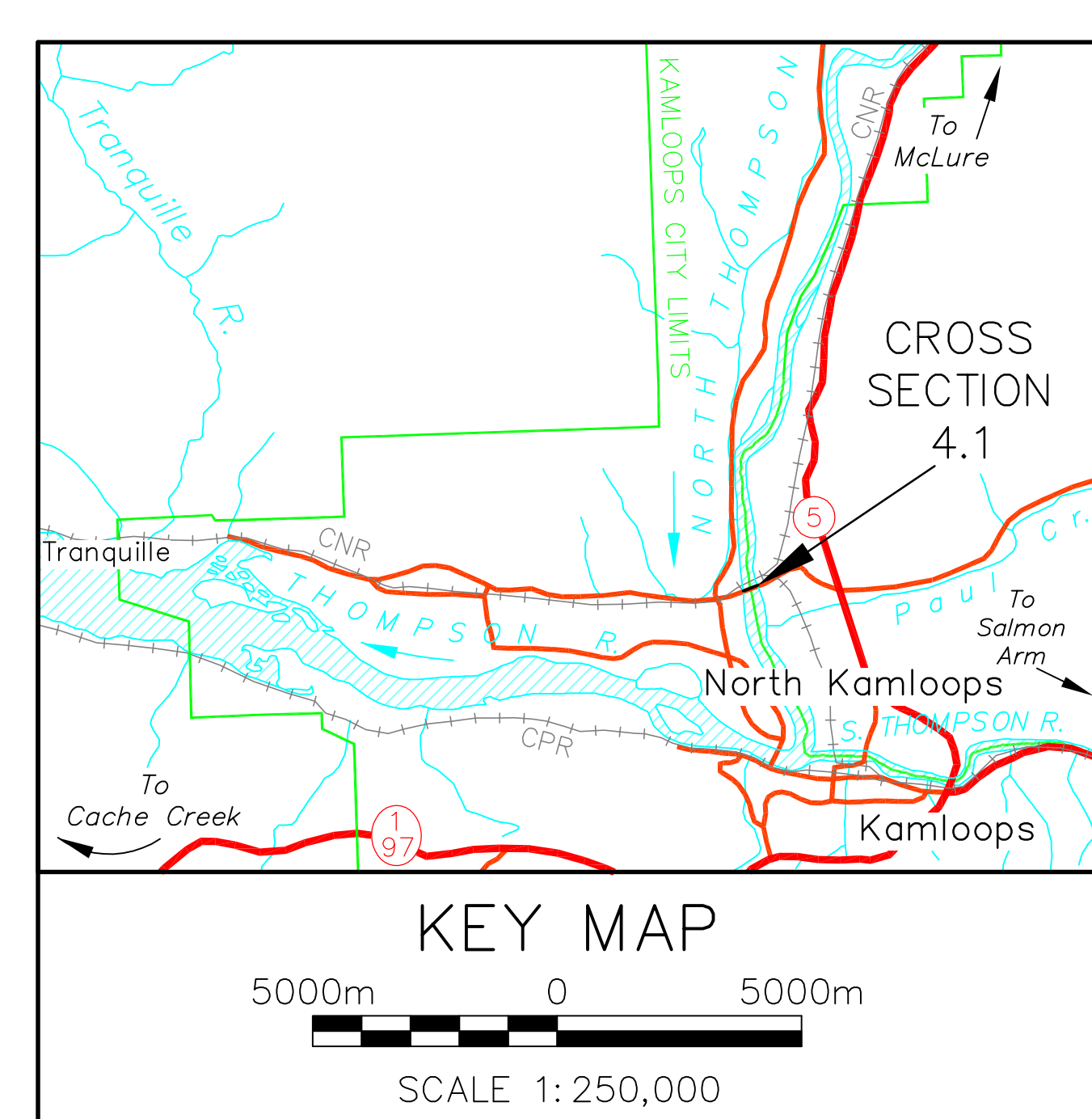
FRONT ELEVATION



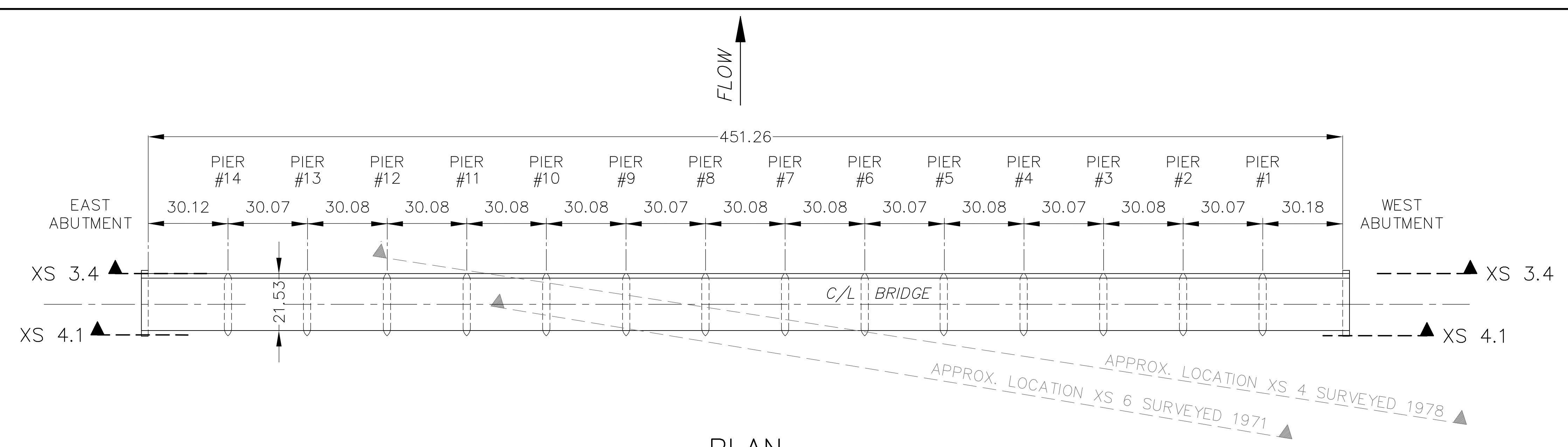
PLAN
PIER DETAILS (TYP.)
SCALE 1:250



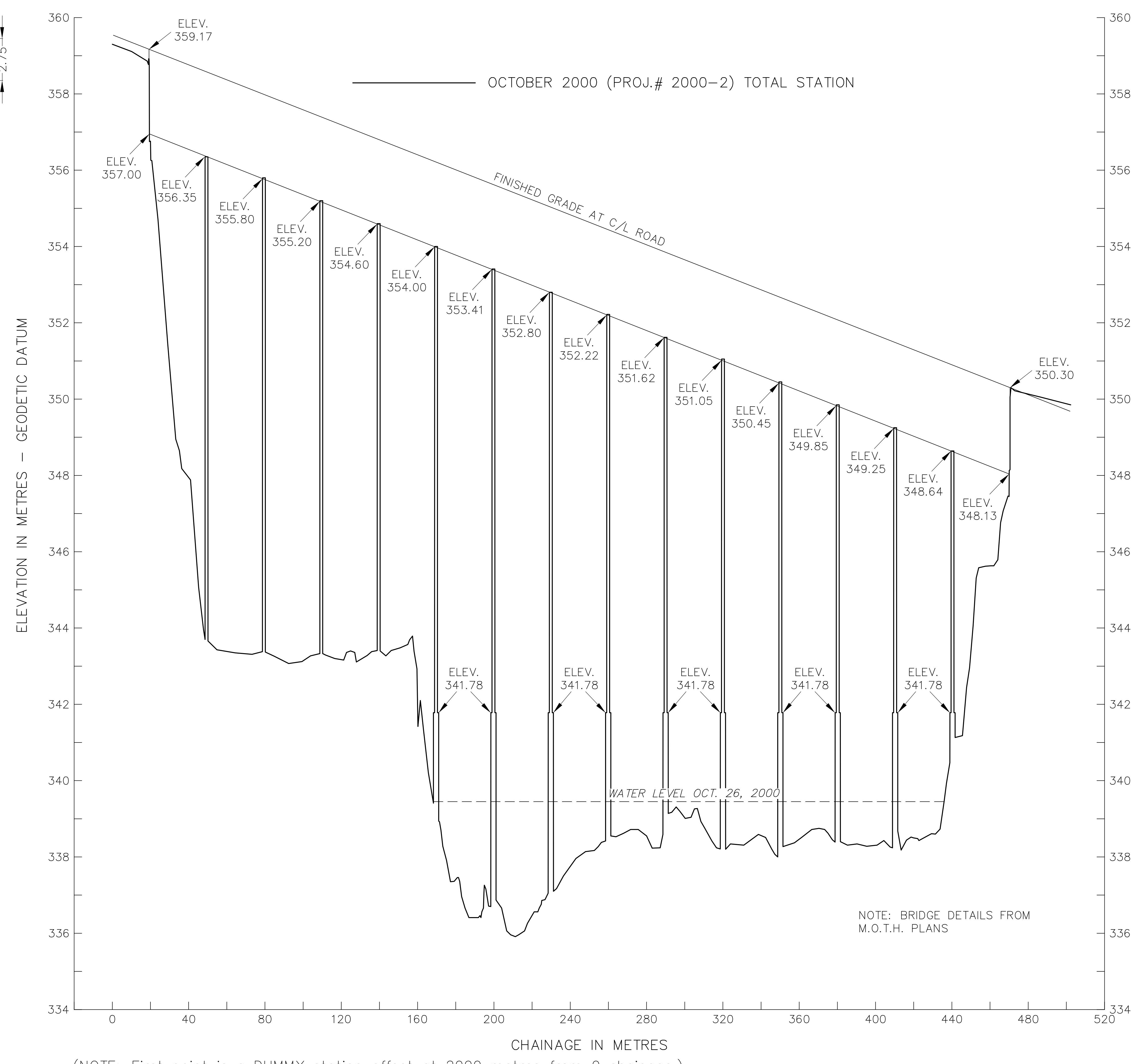
LEFT BANK VIEW



KEY MAP



PLAN



(NOTE: First point is a DUMMY station offset at 2000 metres from 0 chainage.)

NOTE:
This information is considered historical as it represents channel conditions and configuration at the time of the survey only. User must accept responsibility of ensuring that the accuracy and completeness of provided data is suitable for the needs of the project or study. It is provided "as is" without warranty of any kind, whether express or implied. Under no circumstances will the Government of British Columbia be liable to any person or business entity for any direct, indirect, special, incidental, consequential, or other damages based on any use of this information.



RIGHT BANK VIEW



DOWNSTREAM VIEW



UPSTREAM VIEW

NOTE: PHOTO IMAGES - 2000 SURVEY



Ministry of Environment, Lands and Parks
Resources Inventory Branch
Water Surveys Unit

NORTH THOMPSON RIVER AT KAMLOOPS CROSS SECTION 4.1 AT UPSTREAM EDGE OF HALSTON AVE. CONNECTOR BRIDGE # 2810

SCALE HORIZ. 1:2000 VERT. 1:100

PROJECT NO:
2000-2

DATE:
OCTOBER 2000